

Tips for Successful Art Quilt Photography

Studio Art Quilt Associates

By Lynn Krawczyk

Why Do Good Photos of Your Artwork Matter?



- When entering your art into a show, good photos allow the juror to view your work clearly. This increases your chance of being accepted into the exhibit.
- The image you use to enter a show can also be used for show catalogs and show publicity.
- The image you use to enter Virtual Gallery shows is your final entry since the exhibit is shown online only.

Taking good photos at home is easier than you think! Let's look at how to do it.

What Kind of Camera Should I Use?

Digital camera



You can use a digital camera or your smart phone camera.

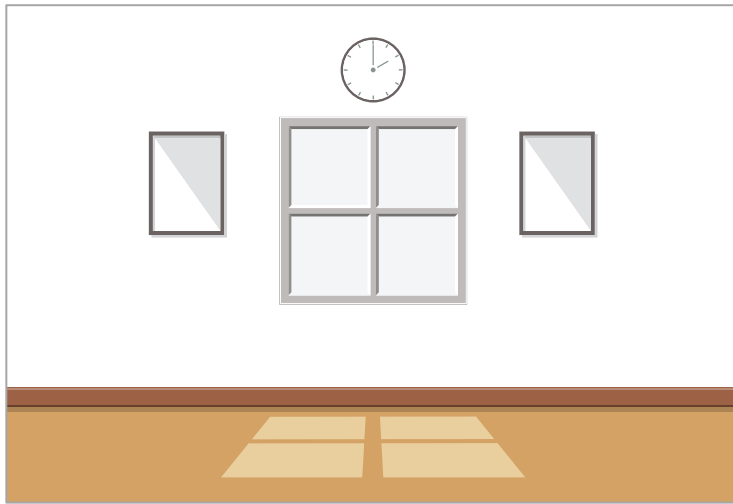
Both types of cameras take excellent photos!

Smart phone camera



What Kind of Lighting Should I Use?

Natural light



Natural light can provide lighting that shows accurate colors of your artwork. Choose a time of day in which the sunlight is not too bright or too dim.

Too bright can make the colors of your art look pale and too dim can create unwanted shadows.

Artificial lighting can also be used to light your artwork. These can be any types of lights that provide even lighting of your work.

Artificial Lighting



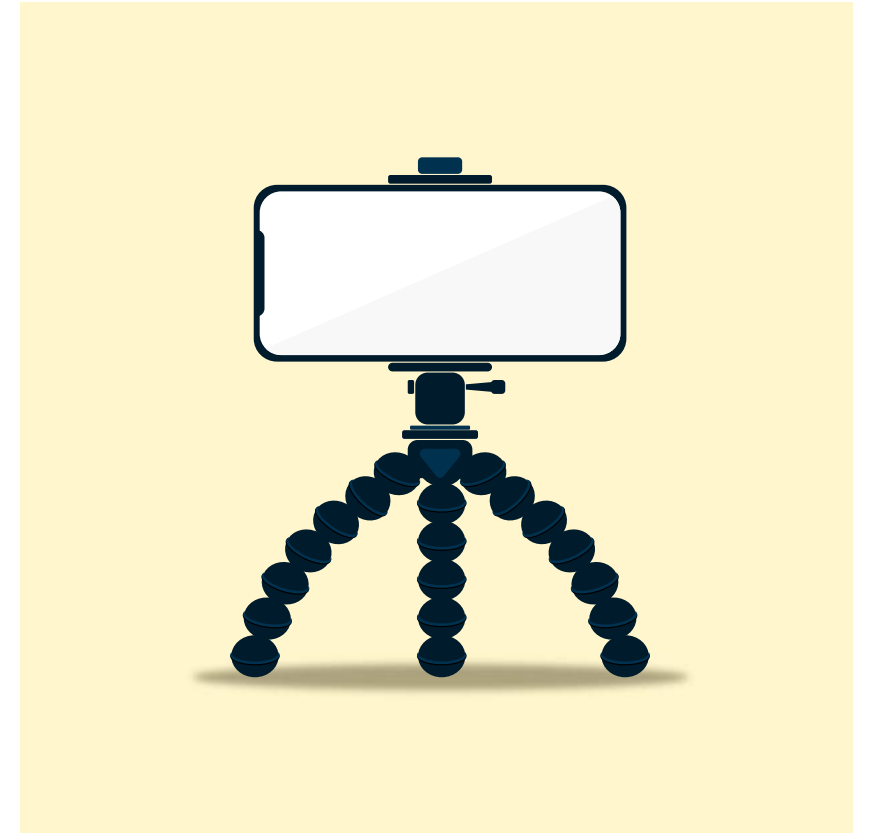
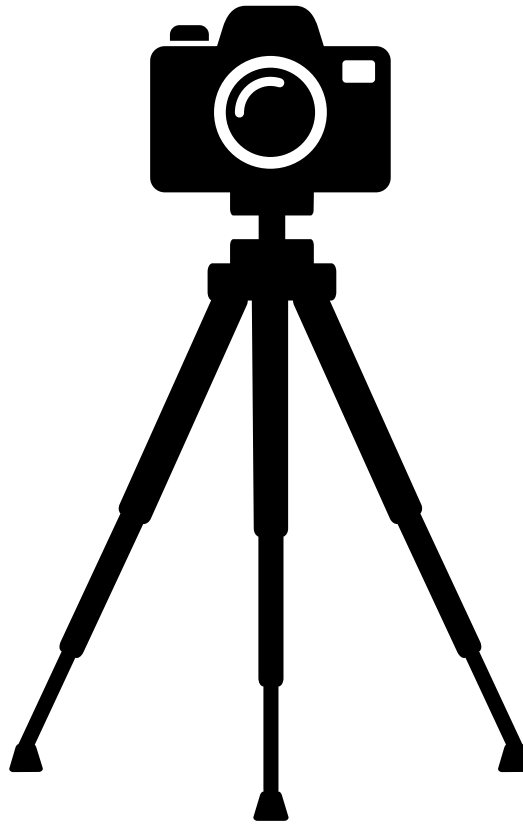
Do I need a Tripod?

If you do not feel you have a steady hand, you may want to consider using a tripod with your camera.

Tripods are available for both traditional cameras and smart phone cameras.

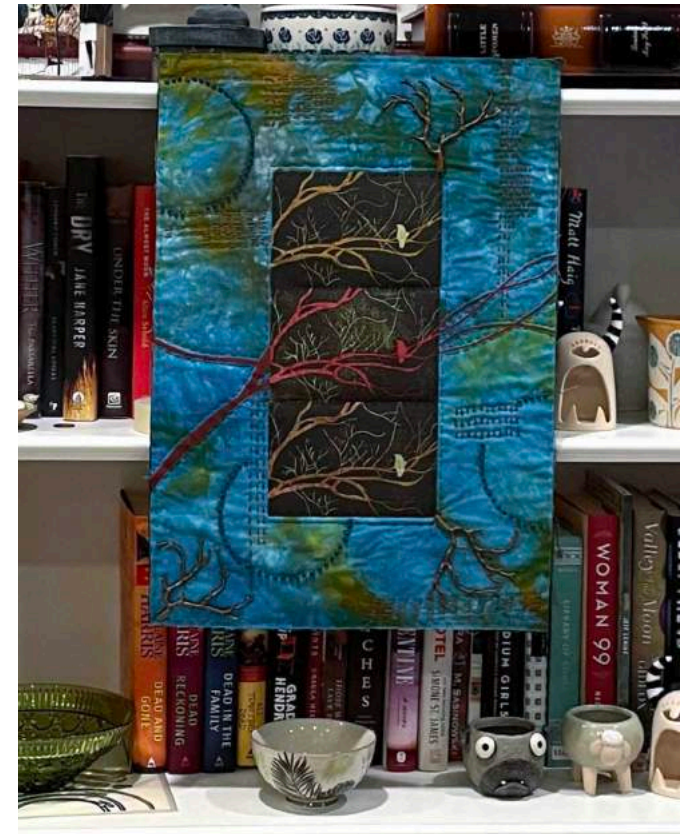
While they are not necessary, some people find it easier to take photos with them.

TIP: Place your tripod on a flat surface to avoid creating distortion in your photo.



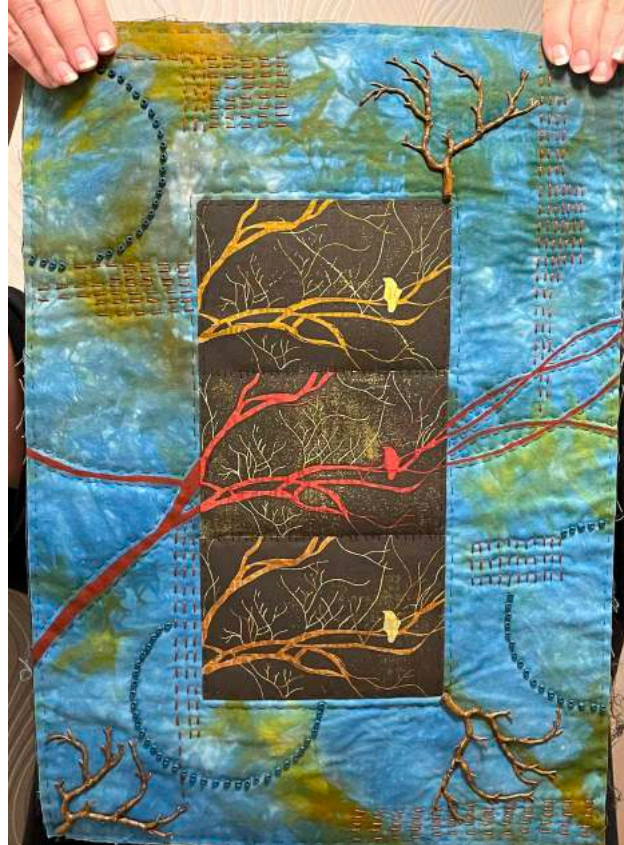
What Kind of Background Should I Use?

- NEUTRAL SOLID colors work best for photo backgrounds. Colors such as white, black, grey, beige. Don't use a background with patterns on it.
- ALWAYS use a background that is a different color than the edges of your artwork.
- AVOID backgrounds that have other objects in them.



How Should I Hang My Art Quilt?

- Hang your quilt so that the hangers don't show in the photo.
- **VISIBLE HANGERS ARE DISTRACTING**, and the image would not be usable for show catalogs or the Virtual Gallery.



Show Your Edges!

- Your image needs to SHOW ALL THE EDGES of your artwork. This applies to 2D and 3D.
- If your work is mounted on canvas or framed, these edges need to be included in the photo too.



Programs for Photo Editing

Any of these options can help you adjust your photo if needed:

- Photoshop from Adobe
- Editing features built into your Smart Phone
- Free online editing program: <https://pixlr.com/>
 - Includes editing options such as color adjustment, remove background, rotation, etc.

REMEMBER!

When editing your photo, **only make changes that are needed to make the photo look like your artwork looks in real life.**

Photography Checklist

Task	YES! 😊
Is my lighting balanced?	<input type="checkbox"/>
Do the colors of my artwork in my image look the same as in real life?	<input type="checkbox"/>
Is my photo in focus?	<input type="checkbox"/>
Is my photo background a neutral color?	<input type="checkbox"/>
Is my photo background a different color than the edges of my art?	<input type="checkbox"/>
Are the hangers I'm using to put my art on the background hidden?	<input type="checkbox"/>
Are all the edges of my art showing in my photo?	<input type="checkbox"/>



Credits

- Artwork in this tutorial used with permission.
- 2D art - "Red Bird" by Lynn Krawczyk
- 3D art - "Pomegranate" by Shannon Dion (also seen to the left)