



NEWSLETTER

Contents

President's Letter	1
Santa Fe, New Mexico	1
More About Santa Fe	2
Conference Schedule	4
Conference Presenters	6
Conference Registration Form	7
Membership Form	8
Exit/Entrance Entry Form	9
3rd Annual SAQA Auction	11
A New Venue for the Art Quilt	11
Conference Headquarters	12
Exit/Entrance	12
Getting to Santa Fe	13
Members' News	14
News From Art/Quilt Magazine	14
Hope Pins	15
Portfolio Rotation	15

PRESIDENT'S LETTER

Yvonne Porcella

We are very excited to announce "Searching the Past for Paths to the Future," SAQA's major conference and exhibition which will take place in Santa Fe, New Mexico, November 1 - 5, 2000. SAQA hosts a major conference every five years. (In off years, SAQA hosts annual one-day educational symposia for its members at various locations.)

You will notice that this issue of the SAQA newsletter breaks from our usual format. We apologize for omitting feature articles and other news items. Look for us to resume our usual format and general information in our spring issue. This issue will have a limited amount of members' news with the bulk of the newsletter devoted to information about our conference. We will also mail this issue to interested persons who are not members of our organization. We hope to entice them into joining us at the conference.

If you join us in Santa Fe, you can meet other members, share your work with other artists, enjoy art quilt exhibitions, hear exciting speakers, learn from the experts, experience the beauty of New Mexico, join in the fun at the SAQA annual auction, and attend the general meeting of the membership. You *will* come away revitalized and ready for the 21st century.

Additional attractions will also be offered in Santa Fe during our conference. The exhibition, *Full Deck*, and other quilts selected from local artists will be exhibited.

The committee has planned a complete program for you, and this newsletter will serve as the *only* prospectus for the conference. Please save it as you make your plans to attend. You will also find an entry form for the SAQA-sponsored juried exhibition, *Exit/Entrance*. This traveling exhibition occurs every five years and it promises to be outstanding. Our 1995 exhibition, *Diversity*, is still being enjoyed by enthusiastic audiences.

SANTA FE, NEW MEXICO

Santa Fe, New Mexico, was established as the seat of power of the Spanish Empire north of the Rio Grande thirteen years before the Plymouth Colony was founded by the pilgrims. Santa Fe is the oldest capital city in North America and the oldest European community west of the Mississippi. The city has preserved many historic buildings, and the current building code mandates using the city's distinctive Spanish pueblo style of architecture consisting of the adobe and wood construction of the past.

Santa Fe, the capital of New Mexico, has a population of 60,000. The downtown core features 500 retail businesses

which are situated within walking distance of the noteworthy historic buildings. At an elevation of 7,000 feet, the climate is mild and the region is host to many outdoor activities while serving as a hub for visitors to the nineteen pueblo Indian villages which surround the area.

Since the early 20th century, Santa Fe has been a refuge for many artists, writers, and musicians. The opera, theatre, and two hundred galleries and museums located in Santa Fe attract visitors throughout the year. The unique cuisine of Santa Fe offers a broad choice for the discriminating diner.

MORE ABOUT SANTA FE

Traveling to Santa Fe

Travel to Santa Fe via plane, bus, or train. The closest large airport serving the major airlines is in Albuquerque, which is 62 miles south. Rental cars or shuttle van services are available for the one-hour drive north to Santa Fe. Airline commuter service from Denver is provided by United Express to Santa Fe's own municipal airport which also accommodates private planes. Greyhound Bus Lines offers service from the Albuquerque airport to the Santa Fe bus station. Amtrak's Southwest Chief passes through Lamy, New Mexico, with shuttle service available for the 14 miles to downtown Santa Fe.

Travel Arrangements

Contact Barbara Dundee at Bruce Travel, Ft. Lauderdale, Florida, 800-771-7407, to book airplane reservations or additional tour packages in, and around, New Mexico. If you contact Barbara by April 30, 2000, she can get you quotes on special air fares to the Santa Fe area. Tell her your intent to travel to Santa Fe, travel departure city, and possible dates of travel. This will allow Barbara time to secure reduced rates for your booking later in the year.

Temperatures and Altitude

Temperatures in Santa Fe during November have a range of high of 50°F (10°C) and lows of 27°F (-3°C). Heavy clothing is advised if you plan to travel to the 12,000-foot elevation of the surrounding mountain regions.

Altitude alert . . . Santa Fe scenery and the altitude may take your breath away! Literally. The average elevation in Santa Fe is 7,000 feet. If you normally live at an elevation of less than 3,000 feet, you should be aware that a rapid change in altitude can occasionally cause health problems. To avoid any problems, get plenty of rest the first 48 hours, avoid vigorous exercise, drink plenty of water, and avoid alcohol the first 48 hours. Check with your doctor if you have any chronic problems, as there is an altitude medication available.

Contact the Santa Fe Convention and Visitors Bureau, PO Box 9098, Santa Fe, NM 87504-0909, 505-984-6760, <http://www.santafe.org>, for more information.

Sites to See

Compiled by Katy Korkos

Activities around Los Alamos, White Rock, Jemez Mountains, Espanola, and Abiquiu require a car since there is no public transportation to these areas. There are some tours that are available through hotels and travel agencies. Some pueblos, such as Nambe Pueblo, offer tours. And, there are private tour companies such as Buffalo Tours. All areas are within 1 1/2 hours of Santa Fe.

Bandelier National Monument and Tsankawi offer hiking, cave dwellings, and Anasazi sites. White Rock Overlook has a great view of the Rio Grande Gorge. Los Alamos features include the Manhattan Project museum, a historical museum, and the Fuller Lodge Art Center.

Abiquiu is Georgia O'Keeffe country and features include the landscapes that inspired her paintings. Tours of her home are limited and are available by advance appointment.

Valle Grande is a spectacular volcanic caldera, over twelve miles across. Huge elk herds roam there. Features are battleship rock, undeveloped hot springs, and hiking. Jemez Monument is an early Spanish settlement historic site. Jemez Springs offers religious retreats, hot springs, and bath house.

Indian pueblos each offer the tourist different aspects of Indian life. The following lists some of the specifics. Santa Clara and San Ildefonso specialty is pottery. Nambe is a weaving center. San Juan, Jemez Pueblo, Cochiti, Santa Ana, San Felipe, all are within an hour drive of Santa Fe, as well as Tesuque and Pojoaque, although those are primarily "gaming" tribes. Most pueblos have visitor centers and plazas as well as artists studios.

Santuario de Chimayo is named the Lourdes of the Southwest, many people make pilgrimages to experience the power of the healing dirt. Ojo Caliente is a developed hot springs and mineral springs where massage and other therapies are available.

The following offer shopping opportunities in the above areas – Pandyu's Quilt Shop in White Rock, Ortega's Weaving Shop in Chimayo, and Pueblo Gift Shops. And, the following offer eating opportunities in the above communities – Katherine's Restaurant in White Rock, Los Ojos in Jemez Springs, Rancho de Chimayo in Chimayo, El Paraqua, Rio Grande Cafe, Angelin's in Espanola, which is central to many pueblos (San Juan, Santa Clara, San Ildefonso).

High Road to Taos is another possible tour by car. See old Spanish towns and beautiful scenery, on the way to Taos. Taos is a beautiful town in a spectacular setting, several museums, many art galleries and restaurants, and lots of fiber art and shopping. Specific shops are La Lana which has handspun wool, Rachel Brown's Rio Grande Weaving Center, Sandra Wright Gallery, and the Common Threads fabric store. The following are suggested restaurants for great meals while in Taos – Mont's Chow Cart if you are looking for inexpensive food, Doc Martin offers more expensive cuisine, as well as many other choices, such as Eske's Brew Pub and the Apple Tree.

The Taos Pueblo is a pueblo which tries to maintain the old ways. It has no electricity but does allow visitors. The setting is beautiful. Rio Grande Gorge Bridge is a tourist spot, not for the faint of heart.

Organized Tours

The following are possible tours currently in the planning stages. If you would like to participate in any of these tours, please let us know. They will be finalized only after a certain number of people express interest. Many of these offerings would have to take place before, or after, the SAQA conference dates due to our very compact schedule of lectures and workshops. If you are interested in any of these tours, please contact us ASAP at info@saqa.com

TOUR OF MUSEUMS

Tours to the following can be arranged for November 3, 12:00 to 4:00 p.m. – Museum of Indian Arts and Culture, Museum of Fine Arts, Museum of International Folk Art, and Georgia O'Keeffe Museum.

TOUR OF ART INSTITUTE

Tour of The Santa Fe Art Institute, watch artists at work. Other studio tours that can be arranged include weaving, jewelry, sculpturing, painting, pottery, etc.

TOUR OF TESUGUE

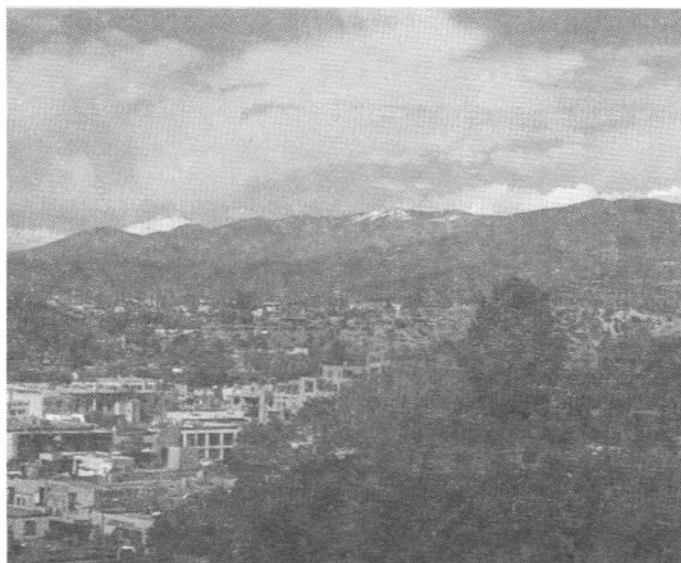
Drive to Tesugue to visit the Shidoni Gallery and Foundry which is 5 miles north of Santa Fe. Exhibits include miniature- to monumental-scale sculptures by regional and national artists. A tour can also be arranged to the foundry to watch artists casting molds, pouring bronze, and finishing sculpture.

TOUR OF ART SCENE

"A Boot About Santa Fe Walks and Tours" will provide you a thorough introduction to Santa Fe's Art Scene. Arts and artists, studios and galleries will feature traditional and modern art, Native American art, sculpture, and jewelry. When you leave you'll know all about Santa Fe's leading artists and dealers.

TOUR OF PUEBLO

Spend some time visiting one, or more, of New Mexico's eight pueblos near Santa Fe. Viewing the sacred pueblo dances may be arranged.



Plan to visit Santa Fe, New Mexico, November 1 - 5, 2000.

TOUR OF ABIQUIU

Visit the O'Keeffe Foundation in Abiquiu and the O'Keeffe home and studio, which date back, in part, to the 18th century, and in which she painted some of her most famous paintings.

TOUR OF HISTORY

Take a half-day walking tour to learn more about the history of Santa Fe with Historic Walks of Santa Fe. The "Prestige Tour" includes lunch, history, and shopping of Santa Fe's finest shops and boutiques.

TOUR OF SHOPS

A shopping excursion of the best of Santa Fe, hosted by Wendy Huhn and Kathleen Clephane, might be of interest to you. Personal purchases are at the discretion of the shopper and will be confidential.

COUNTRYSIDE HIKING

For those who want to get out and experience our beautiful landscape, take an afternoon hike on one of our most spectacular trails. A group would be a must for this.

ART CLASS

Take an art class. Dozens of art classes are offered regularly by New Mexico Artists Association, Valdez, Santa Fe Glass Workshops, and Santa Fe Workshops. We will get an account of who wants to take what, and send up a group class, if possible.

CULINARY CLASSES

Hone your culinary skills with a Santa Fe cooking class at Santa Fe School of Cooking for Native American cuisine. Or, for a truly French experience, spend an afternoon in the home of a well-known French chef, learning some tricks about French cooking!

SPA EXPERIENCE

Relax and renew at Santa Fe's world class spa, Ten Thousand Waves. Enjoy everything from a private hot tub, massage, salt wrap, facial, and aroma therapy. We again, will set up a group program, if there is enough interest.

CONFLICTING DATES

The dates for the SAQA conference were selected in October, 1998. The hotels were contacted, other arrangements were made, and the dates of November 1 - 5 were set. In 1999, we were made aware of the conflicting dates with the International Quilt Festival in Houston, Texas. Those dates in the past have always been the last full weekend in October. By the time the International Quilt Festival set their dates, our dates could not be changed.

We apologize for any inconvenience this may cause our members.

CONFERENCE SCHEDULE

All conference meetings take place at Fort Marcy Suites Conference Room unless otherwise listed.

TUESDAY, OCTOBER 31, 2000

P.M.

2:00 Meeting of the SAQA Board of Directors

WEDNESDAY, NOVEMBER 1, 2000

A.M.

9:00 Meeting of the SAQA Board of Directors

P.M.

12:30 Meeting of the SAQA Board of Directors

4:00 Conference Registration

7:30 Welcome Reception and Opening Events

Artist/registrants will present their slides. Each artist will have one minute to show 4 slides and introduce themselves and their work to the audience.

THURSDAY, NOVEMBER 2, 2000

A.M.

9:00 Welcome

9:15 "Building a Niche Market: New Millennium Marketing Fiber Art"

Jill Heppenheimer

Making art is part of every artist's day-to-day life, but developing thriving alliances with galleries and/or creating a repeat, loyal buyer base is essential for those seeking to be self-sufficient through their art form. You will learn about vision and relationship marketing, product mastery, creating a balance between marketing and operations, and implementing a strategic plan that you'll stick with. This lecture is about fostering a business that you love to wake up to in the morning.

10:30 Break

Sponsored by Santa Fe Weaving Gallery

10:45 "The Myths and Realities of Being a Professional Artist"

Geoffery Gorman

Gorman will answer why some artists lag behind in the marketplace while others literally soar. He will identify the necessary strategies successful artists must use with his "Ten Principles of Successful Artists." "Ten Myths in the Art World" analyzes beliefs and notions that impede artists in today's art world. And, "Ten Important Habits of Successful Artists" looks at traits that successful artists have incorporated into their daily lives. This lecture offers key elements that artists need to keep in mind as they build and strengthen their foundations of success.

P.M.

12:00 Lunch on Your Own

3:00 "Writing Your Way Here"

Judyth Hill

The first part of stand-up poet Hill's presentation will be a bardic romp through the means and metier of working with our "stuff," how the personal and universal aspects of our histories and our dalliness can be "pieced" to create work that is necessarily rich and deep. Juicy and relevant poems, stories, and art woman wisdom will irreverently address the sacred path of making which we are so very lucky to be walking.

4:30 Break

4:45 "Hands-on Poetry" Workshop

Judyth Hill

A collage project that vividly engages these processes, and creates an exuberant and playful opportunity for blending image, text, and lots of good stuff. Various materials will be provided, and participants are invited to bring along anything they wish to incorporate, as well as materials to share. Have Fun! Celebrate the spirit of abundance and joyousness that is the essential heart of the creative act.

6:00 Reception for *Full Deck* Exhibition

7:30 Dinner

Cafe San Estivan

One of the best restaurants in Santa Fe, with great atmosphere and a wonderful history that surrounds Our Lady of Guadalupe. The restaurant owner, a former monk, situated his restaurant next door to one of the oldest churches of Our Lady of Guadalupe. The restaurant will be closed to the public, open to our group only, and seats approximately 75. This event will require advance reservations. We hope to have surprise local entertainment during dinner.

FRIDAY, NOVEMBER 3, 2000

A.M.

9:00 Welcome

9:15 "Energy Opportunity"

Gail Feldman

Taking topics from her book, the power in her message is how to transform the energy focused on life crises into creative self-expression and transcendent living. The artists she writes about illustrate a determined overcoming of emotional and physical pain. Feldman will speak about the "energy opportunity," the higher creativity that every life change brings to us.

10:30 Break

Sponsored by Alegre Retreat

10:45 Resume Previous Session
Gail Feldman

P.M.
12:00 Free Time

4:00 Reception for *Exit/Entrance*
Capitol Building

This event will take place at the New Mexico Capitol Building in Downtown Santa Fe. The Governor of New Mexico and the First Lady will be in attendance. Evening attire is preferred.

6:00 Opening Reception
Thirteen Moons and Running Ridge Galleries
Cocktails and hors d'oeuvres will be served. You can also tour other galleries on Canyon Road.

SATURDAY, NOVEMBER 4, 2000

A.M.
9:00 Welcome

9:15 "Buying and Collecting Art in the Past and in the Future"

Arlene LewAllen

LewAllen will speak about the perspectives of a gallery owner and what she advises art patrons to look for and what to avoid when building art collections.

10:30 Break
Sponsored by SAQA

10:45 "Hearing Our Untold Stories"
Laura Cerwinske

Through incantation, the power of storytelling, we can lift the spell of the untold stories that run our lives and alchemize the power of new imagery. Laura will introduce the simple, stream-of-consciousness writing technique through which you will learn to expand your awareness of the stories that hinder your health and creativity. This process directs thoughts through the hand, rather than the mind or mouth, and out onto the page, free of mental judgment or censorship.

P.M.
12:00 Lunch on Your Own

3:00 "Art, Passion and Creativity"
Laura Cerwinske

Using Cerwinske's "Six Classic Principles of Transformation," students will learn how to metamorphosis chaos into art, pain into spiritual nourishment, and disease into passion. As Cerwinske teaches the process that integrates creativity, healing, and spirituality, students marvel at the ease and speed to flowing expression and blossoming imagination.

4:30 Break

4:45 Resume Previous Session
Laura Cerwinske

7:00 Banquet

Included will be the SAQA auction organized by Sue Benner and Barbara Hartman.

SUNDAY, NOVEMBER 5, 2000

A.M.
9:00 "The Artist Gets It!"
Terrie Hancock

Artist and resident of Valdez, New Mexico, Hancock will give her insight into the life of a successful artist and offer her perspective on the events of the past few days.

10:00 Break

10:15 General Meeting of SAQA
Yvonne Porcella, Presiding
Includes the installation of the President of Board of Directors

P.M.
12:00 Adjourn

FORT MARCY

HOTEL SUITES

320 ARTIST ROAD
SANTA FE, NEW MEXICO 87501
(505) 988-3400 • (800) 561-0898
FAX (505) 984-8682
E-mail: smalwood@rt66.com



CONFERENCE PRESENTERS

LAURA CERWINSKE, Plantation, Florida

Laura Cerwinske is a writer and artist who teaches a process that integrates writing, healing, and creativity. She has published over fifteen books, exhibits internationally, and has been a student of spiritual practice for more than thirty years. Author of *Writing as a Healing Art*, *The Transforming Power of Self Expression*, Putnam, 1999; *In a Spiritual Style, The Home as Sanctuary*, Thames & Hudson, 1997; and *In Your Own Style, The Art of Creating Wonderful Rooms*, Thames & Hudson, 1994.

GAIL C. FELDMAN, Ph.D, Albuquerque, New Mexico

Gail Carr Feldman is a clinical psychologist, an award-winning author, and a popular public speaker. Her early professional experience as a social worker involved service to Los Angeles gang groups, prison parolees, and welfare families. In New Mexico, she worked at the Family and Child Guidance Center, which has a cross-cultural clientele of children, adolescents, and families. She has been in private practice for twenty-seven years, serving a wide range of clients with a special focus on hypnotherapy. She served for twenty-two years as assistant professor, psychiatry department, University of New Mexico School of Medicine. She has appeared on radio and television programs across the country, including "Larry King Live." Her powerful message involves transforming the energy focused on life crises into creative self-expression and transcendent living. She is the author of *From Crisis to Creativity: Taking Advantage of Adversity*, Book Partners, Wildonville, Oregon.

GEOFFERY GORMAN, Santa Fe, New Mexico

Geoffery Gorman left the art studio behind twenty years ago to work in the world of fine art sales, where he became the director of Horwitch LewAllen Gallery. He left that position to become the executive director of the Allan Houser Estate. Five years ago, he started GG+A, a consulting and career development firm. In addition to his consulting practice, Gorman curates exhibitions, organizes seminars and panel discussions, and puts together corporate art collections. He is also active with several arts associations.

TERRIE HANCOCK, Valdez, New Mexico

Terrie Hancock has been a successful artist with numerous group and solo exhibitions to her credit. She has exhibited in Quilt Nationals since 1981 and was included in the pivotal art quilt touring exhibition, *The Art Quilt*, in 1986. A recent full-time resident in New Mexico, she has received an individual artist grant from the City of Cincinnati in 1995 and the Ohio Council of the Arts in 1990. Her work is included in many private and public collections.

JILL HEPPENHEIMER, Santa Fe, New Mexico

Jill Heppenheimer is the co-owner of Santa Fe Weaving Gallery and coordinator of Design with HeART. With an MBA in marketing and over twenty years of business experience, she has directed or consulted with numerous businesses, large and small. Committed to helping artists benefit from the marketplace, she works directly with artists in managing the business side of their art lives, through workshop settings and classes.

JUDYTH HILL, Las Vegas, New Mexico

Judyth Hill graduated from Sarah Lawrence College. Twenty years ago she moved to New Mexico, where she has dedicated herself to studying and teaching creative process. Her four chapbooks of poetry include *Baker's Baedaker*, Shacharit Press; *Hardwired for Love*, Pennywhistle Press; *The Goddess Cafe*, Fish Drum; and *Season With Angels*, Rockmirth. Judyth is committed to completion of the creative act in public readings and in performance. She has been described as "energy with skin." To quote Hill, "I am from the everything matters school of writing. I have faith in the intricate connections between political, emotional, cognitive, spiritual bodies within the self, and the social web and all of this is connected to our funny bone. Remember to show compassion, forgiveness, and a little leg."

ARLENE LEWALLEN, Santa Fe, New Mexico

Owner of the successful LewAllen Contemporary Gallery in Santa Fe, Arlene LewAllen studied at the Art Institute of Chicago, Northern Illinois University, and University of California. She has been a teacher and involved in galleries since 1962. In 1978, she began working in the Santa Fe galleries and has been director, partner, and owner of various galleries since 1987. She has exhibited her own work from 1962 to 1984. She is a popular juror, has participated on state arts commissions, and many local gallery associations. Through her gallery, she has published articles, curated exhibitions, and, in 1997, organized the *Elaine DeKooning Retrospective*.

CONFERENCE REGISTRATION FORM

Please Type or Print

Send, or FAX (541-937-8061), this registration form to Studio Art Quilt Associates, PO Box 287, Dexter, OR 97431.

Name _____

Address _____

City/State _____ ZIP _____ Country _____

Home Telephone _____ Work Telephone _____

E-mail Address _____

Signature _____

We must have your signature to process your registration form.

CHECK ONE:

- ☐ Member Conference Fee, November 1 - 5, 2000\$400.00
- ☐ Non-Member Conference Fee, November 1 - 5, 2000 (Includes membership dues to SAQA.)\$435.00
- ☐ Member Conference Half-Time Fee, November 4 - 5, 2000 (Includes Friday night gallery openings.) ..\$225.00
- ☐ Non-Member Conference Half-Time Fee, November 4 - 5, 2000\$260.00
(Includes Friday night gallery openings and membership dues to SAQA.)

CHECK ALL THAT APPLY:

- ☐ Special Dinner, November 2, 2000\$40.00
(Limited to the first 75 people who register. Price does not include alcoholic beverages.)
- ☐ Banquet, November 4, 2000 (Cash bar will be available.) \$35.00
- ☐ Auction, November 4, 2000 (Cash bar will be available.) Free

TOTAL AMOUNT INCLUDED\$ _____

Please make check, or money order, payable to **Studio Art Quilt Associates**. If using a credit card, provide the following information:

☐ Visa ☐ MasterCard ☐ American Express

Card No. _____

Expiration Date _____

Signature _____

CHECK TOURS INTERESTING TO YOU:

Availability and cost will be sent to you later when interest is known.

- | | |
|--------------------------------------------------------------------|---------------------------------------------|
| <input type="checkbox"/> Tour of Museum of Indian Arts and Culture | <input type="checkbox"/> Tour of Abiquiu |
| <input type="checkbox"/> Tour of Museum of Fine Arts | <input type="checkbox"/> Tour of History |
| <input type="checkbox"/> Tour of Museum of International Folk Art | <input type="checkbox"/> Tour of Shops |
| <input type="checkbox"/> Tour of Georgia O'Keeffe Museum | <input type="checkbox"/> Countryside Hiking |
| <input type="checkbox"/> Tour of Art Institute | <input type="checkbox"/> Art Class |
| <input type="checkbox"/> Tour of Tesugue | <input type="checkbox"/> Culinary Classes |
| <input type="checkbox"/> Tour of Art Scene | <input type="checkbox"/> Spa Experience |
| <input type="checkbox"/> Tour of Pueblo | |

Refunds/Cancellations/Disclaimer

Requests for refunds must be made in writing and are subject to a \$50.00 process fee for the conference and/or special events. Full refunds less the above amount will be made if the request is postmarked by September 15, 2000. No refunds after that date. You may transfer your reservation to another provided you notify SAQA of this transaction.

Studio Art Quilt Associates cannot be held liable for any program changes, damage, or personal injury incurred in relation to, or during, the conference. Registration form signatures, or credit card registrations which have been mailed, FAXed, or telephoned, grants SAQA permission to use photographs taken at the conference for educational and/or promotional purposes. Signature also confirms understanding and agreement to material in prospectus.

MEMBERSHIP FORM

Studio Art Quilt Associates, a non-profit national organization, was founded to serve artists working in a quilt medium whose work deserves this kind of recognition, as well as dealers, teachers, curators, and collectors who recognize the importance of the emerging Art Quilt, but who need to know more about the field's depth and range.

The goals of **Studio Art Quilt Associates** are to:

- Encourage and facilitate research, critical writing, and the publication of articles about the art quilt in the art press, popular press, and scholarly journals. It will do so by acting as a clearing house of information about the artists and their works of the art quilt movement.
- Make "enabling" materials available to curators, teachers and students, dealers and gallery owners, and art consultants, including bibliographies, reprints, professional artist members' slides and the résumé portfolios, and referrals to teachers and speakers for workshops and symposia.
- Publish a newsletter addressing the professional needs of the working quilt artists and providing a forum for the exchange of opinions and information among artists, dealers, and collectors.
- Identify collectors and patrons of art quilts to SAQA members and to each other, and to foster their interest in the movement by sponsoring regional symposia and studio visits with member artists.
- Encourage quality exhibitions, with documentary catalogues and critical review.

If you would like to join the association, please complete the following and mail today. Thank you.

ACTIVE MEMBER

- \$35.00 (One Year) ◦ \$45.00 (One Year, International)
- \$65.00 (Two Years) ◦ \$95.00 (Three Years)
 - Quarterly Newsletter
 - Membership Card
 - On-Site Use of Archive Materials
 - Notice of Exhibitions
 - Notice of Meetings and Educational Symposia
 - Eligibility for Juried Member Exhibitions
 - Free Use of Services and Archive Projects

PROFESSIONAL ARTIST MEMBER

- \$100.00 per year (\$65.00 in addition to Active Membership)
- \$110.00 per year International (\$65.00 in addition to Active Membership)
 - Same as Active, plus:
 - Artwork Represented in SAQA Rotating Portfolios
 - Artwork Represented in Artist Slide Registry
 - Artwork Promoted for Site-Specific Exhibitions

SPONSOR

- \$100.00 or more per year
 - Same as Active, plus Invitations to Special Sponsor events at meetings.

PATRON

- \$500.00 or more per year
 - Same as Sponsor, including a SAQA Commemorative Item
 - Recognition as Patron Member of SAQA

You can now join by using your credit card. Please send your check, or credit card information, to **SAQA, PO Box 287, Dexter, OR 97431**.

Name _____

Address _____

City, State, ZIP _____

Home Telephone _____ Office Telephone _____

FAX _____ e-mail address _____

MC/Visa/AE Card Number _____ Expiration Date _____

Signature _____

ENTRY FORM

Artist Name: _____
Address: _____
City: _____ State: _____
Zip Code: _____
Daytime Phone: _____
Evening Phone: _____
E-mail address: _____

*I agree to all terms and conditions as set forth
on this entry form/prospectus.*

Artist signature _____

Date _____

Mail entry to:

Exit/Entrance
PO Box 6427
Vancouver, WA 98661-6427

Include:

- ☐ Completed entry form
- ☐ Entry Fees:
 - **\$20 (U.S.) Member of Studio Art Quilt Associates**
 - **\$55 (U.S.) Non-member**

Make check or money order payable to:
"Studio Art Quilt Associates"

OR

VISA / Mastercard / American Express
(Circle card type)

Card # _____

Expiration date _____

- ☐ Two slides of each entry (maximum
three artworks.) 40" maximum size of
artworks
- ☐ Large SASE with correct postage and
slide protection for entry notification
and slide return, if desired.

1. Title: _____

Size: _____

Date completed: _____

Materials/Methods: _____

Insurance value: _____

_____ Accepted _____ Declined

2. Title: _____

Size: _____

Date completed: _____

Materials/Methods: _____

Insurance value: _____

_____ Accepted _____ Declined

3. Title: _____

Size: _____

Date completed: _____

Materials/Methods: _____

Insurance value: _____

_____ Accepted _____ Declined



PO Box 287 Dexter, OR 97431

EXIT/ ENTRANCE

**An exhibit of art quilts interpreting our
departure from one century and entry
into another.**

During the Studio Art Quilt Associates conference, Santa Fe 2000, Exit/Entrance will be presented in the New Mexico State Capitol Building, by the New Mexico State Capitol Arts Foundation, and in the Governor's Art Gallery on the third floor of the New Mexico State Capitol Building. Exit/Entrance will be a three- to five-year traveling exhibit to showcase the excellent work that is being done in the art quilt medium. Please contact Studio Art Quilt Associates regarding further exhibit venues.

The juror for this exhibit will be Elizabeth Ann Coleman. Coleman is the David and Roberta Logie Curator of Textiles and Costumes at the Boston Museum of Fine Art. Over her several decades long career as a textile curator Ms Coleman has always been associated with a museum collection known for its historic quilt holdings. In each location she has seen to it that the public was given access to this often forgotten aspect of the museum's holdings through lectures, exhibitions and publications.

Any member of Studio Art Quilt Associates is eligible to enter this exhibit. Non-member entry fee includes a one-year membership to Studio Art Quilt Associates.

This exhibit is a production of Studio Art Quilt Associates, a non-profit organization founded to promote the importance of the studio art quilt.

COPY THIS ENTRY FORM FOR YOUR RECORDS * COPY THIS ENTRY FORM FOR YOUR RECORDS

CALENDAR

Deadline for submissions: July 15, 2000

Notification of acceptance: August 15, 2000

Deadline for accepted artwork to arrive:

October 15, 2000

Expect accepted artworks to tour for up to five years.

REQUIREMENTS

Each artwork submitted to *Exit/Entrance* must fulfill the definition of an art quilt established by Studio Art Quilt Associates:

A contemporary artwork exploring and expressing esthetic concerns common to the whole range of the visual arts -- painting, printing, photography, graphic design, assemblage and sculpture -- which retains, however, through material or technique, a clear relationship to the folk art quilt from which it descends.

All artwork must be original. Artwork which is imitative of imagery identified with another living artist will be excluded. **Due to limited space in the exhibition venue, artworks are limited to 40" in any direction. Maximum number of entries per artist is three.**

Work will be chosen based on the following criteria:

- ❑ Excellence of expression (Does this artwork fluently express the artist's intent?)
- ❑ Originality of artwork (Is this the artist's own expression?)
- ❑ Suitability for exhibit (How well will these artworks exhibit as a group?)

Artworks will be juried from slides. Submit two slides of each artwork, a full view and a detail of an area approximately 12" x 12". Artworks must be photographed on a plain background. **Slide mounts must be in perfect repair.**

Label slides according to the sample shown at right. For best results, have your work professionally photographed. Any artwork that differs markedly from the submitted slides will

not be accepted for the exhibit.

Entry fee of \$20 covers six slides -- **three** artworks with a detail of each. Entries may be made from outside of the U.S. provided appropriate documentation for the works can be obtained if the work is accepted for the exhibit.

Artist's signature on entry form indicates that permission is given for slides to be used for publicity and for work to be displayed electronically. Artist retains copyright on work.

OTHER INFORMATION

Insurance for all artworks is the responsibility of the artist. Artist is responsible for shipping and insurance to and from Studio Art Quilt Associates. Shipping information will be sent to artists whose artwork is accepted for the exhibit.

Artworks must be ready to display, with specific instructions for any non-standard display methods. All artworks must remain on display throughout the duration of the exhibit.

At this time, we anticipate that *Exit/Entrance* will be a traveling exhibit for three to five years.

Studio Art Quilt Associates prefers to keep all entry slides for archival purposes. However, if for any reason an artist wants to have slides of unselected work returned, he or she must include a self-addressed envelope **with correct postage** with the entry materials. All slides not returned to entrants will become part of the SAQA historical archives.



PO Box 287 Dexter, OR 97431

FOR MORE INFORMATION

Direct inquiries about the exhibit to:

Studio Art Quilt Associates
PO Box 287*
Dexter, OR 97431

541-937-8061

e-mail: info@saqa.com

***NOTE:** Do NOT submit entries to this address. See address below.

Submit entries to:

Exit/Entrance
PO Box 6427
Vancouver, WA 98661-6427

Incomplete or incorrect entries will be eliminated from consideration.

Label slides as shown: (indicate TOP of slide)

Last name, First name	
Title of work, date completed	
<div style="border: 1px solid black; width: 100px; height: 100px; margin: 0 auto;"></div>	
Size of work (On detail slide indicate techniques used.)	

Top

3RD ANNUAL SAQA AUCTION

Hold on to your hats as it just doesn't get any better than this! Back by popular demand, Sue Benner and Barbara Hartman will co-host SAQA major fund-raising event during the Saturday evening gala, November 4, 2000. The evening promises to be a night to remember with fun and revelry.

Just to whet your appetite, here are a few of the items from past years – vacation retreats in Taos, San Francisco, New York, Massachusetts, and San Diego; guided tours; art, jewelry, hand dyed, and printed fabric; clothing; fun stuff; and a special blue dress (labeled from The Gap) donated by an unknown woman. Last year's auction in Houston raised over \$5,000.

This year, a very special auction item will be presented by organizer, Yvonne Porcella. "Art Gallery in a Box" is a beautifully decorated 12" x 12" box which contains one dozen 12" x 12" ready-to-hang artworks in paper or fabric. These inventive pieces are works by twelve outstanding artists, including Michael James, Susan Shie and James Accord, Joan Schultz, Nancy

Erickson, Wendy Huhn, plus seven more. This promises to be a big ticket item. Imagine having the chance to own work by twelve artists!

The auction items will be open for bid during the Saturday evening festivities. The auction items can be viewed before the auction begins.

How can you make Auction 2000 a success? By donating, be creative, the sky is the limit, and by bidding. Remember SAQA is a non-profit educational corporation, certain donated items may be tax deductible, under the provisions of tax laws.

If you have items to donate for the auction, please contact either Sue Benner or Barbara Hartman, as soon as possible. Sue's address is 8517 San Fernando Way, Dallas, TX 75218, 214-324-0611, suebenner@aol.com. Barbara Hartman's address is 122 Red Oak Lane, Flower Mound, TX 75028, winerunner@aol.com. Any, and all, suggestions are more than welcome.

A NEW VENUE FOR THE ART QUILT

When Mary Anhaltzer opened Thirteen Moons Gallery, in March of 1999, in Santa Fe, New Mexico, she set a powerful intention in motion. "I want to raise public awareness of the art quilt, and I want to donate our profits to women and their families, enabling them to start their own businesses."

To facilitate her goal, Mary began working with a group called the Katalysis Partnership, an American-based organization which implements a program called Bootstrap Banking. Its objective is eliminate poverty in financially-depressed countries.

Katalysis Partnership makes small loans to low-income micro entrepreneurs, providing resources they need to better their economic position. The Bootstrap Banking program has an enviable 97 percent loan repayment rate. If one woman in the group is unable to make her payment in a given month, the other women in the group are required to make it for her. Eighty-five percent of the borrowers are women, and one hundred percent are working towards economic and social self-reliance for themselves, their families, and their communities. There are currently 22,000 women on this program, giving them the first opportunity to have running water and clothing so their children can go to school. The women are trained to run businesses, setup and run a community bank, and market what they produce. Program participants are required to save 10 percent of their monthly earnings.

Without a doubt, Mary Anhaltzer's dream has developed a wondrous place. The gallery's representation of the art quilt, and its support of women helping women by offering the profits to such a noble cause has been realized. The gallery name, Thirteen Moons, holds a powerful meaning as the moon is the most ancient symbol of the Feminine Spirit and all Her creative force. It is the invisible flow of energy that brings creativity into being.

Many SAQA member artists have shown their work at this gallery alongside Mary's own quilts. Some artists have years of experience and exhibition histories; others are at earlier points in their careers. Since the grand opening, the gallery has hosted

the works of such artists as Kathleen Sharp, Therese May, Penny Sisto, Debra Lunn and Michael Myrowka, Lauren Camp, Nancy Erickson, Judith Trager, Janet Ghio, and Hollis Chatelain.

During the SAQA conference, Thirteen Moons Gallery will host a professional artist member show for four weeks. Running Ridge Gallery, located next to Thirteen Moons Gallery, will also host an exhibit of works from professional artist members of SAQA. These venues will offer the artists excellent exposure in the Santa Fe area. The opening receptions for both exhibits will be held Friday, November 3, 2000.

Each current professional artist member of SAQA has received in the mail the entry form for the two juried PAM exhibitions to be hosted by these galleries. Each gallery has specific restrictions as to size limits for exhibition, and the artists must choose which gallery to submit entries. Plan to attend the conference, and while you are there, come and see the exhibits, enjoy the opening receptions, and support SAQA by entering your work.



Interior view of Thirteen Moons

CONFERENCE HEADQUARTERS: FORT MARCY HOTEL SUITES

This unique suite/hotel at 320 Artist Road, Santa Fe, is located four blocks from the downtown plaza. The hotel offers suites with a living room, kitchen and eating area, private baths for each bedroom, and most suites have fireplaces. There is shuttle service to the downtown area and an extended continental breakfast. The facility has an indoor pool and hot tub and beautiful grounds in the Santa Fe style. SAQA special rates are as follows:

- 1 bedroom \$ 99 for 1 - 2 people per night
- 2 bedroom \$144 for 2 - 4 people per night
- 3 bedroom \$199 for 3 - 6 people per night

Their cancellation policy is that a \$25.00 cancellation fee is charged anytime after the reservation is booked. If you cancel with less than 72 hours' notice, the cancellation fee includes the cost of one night's lodging at the rate booked.

We encourage you to stay with us at Fort Marcy Hotel Suites. The added attraction of being in the headquarters hotel is the availability of your room to where the conference is being held. Also, with kitchens in the rooms, guests can keep costs to a minimum by providing their own food. Continental breakfast is included with room costs. Room costs are subject to local room taxes in addition to published room rate.

We have reserved a block of 35 rooms at the above rate. This special rate is only available until September 29, 2000. You must make your own reservations. Reservations must be made directly with the hotel and not through a travel agent to receive the discounted rate. Mention that you are with Studio Art Quilt Associates Conference. Call - 800-561-0898 or 505-988-3400; FAX - 505-984-8682; or e-mail - smalwood@rt66.com, for reservations at the hotel. The hotel will require your personal billing information and time of arrival and departure. If you desire to come early or stay after the conference dates, the hotel will work with you regarding rates for additional days.



Spanish pueblo style of architecture is prevalent in Santa Fe.

EXIT/ENTRANCE

The entry form for *Exit/Entrance*, the Studio Art Quilt Associates international juried exhibition, is included in this newsletter. Feel free to make extra copies of this form for yourself or your friends. The exhibit will be juried by Boston Museum of Art curator, Elizabeth Ann Coleman. Works are limited to 40-inch width or height, due to the size restraints of the opening venue.

We are very excited to announce that this exhibit will be displayed in the State of New Mexico Capitol Gallery. This government building is open to the public Monday through Friday from 8:00 a.m. to 5:00 p.m. The exhibition space is marble, brass, and wood and is in a highly visible area in the Capitol building. The exhibit dates are October 31 through December 8, 2000. We have plans for a national tour of the exhibition, and artists who are accepted into this exhibition will be informed of the touring schedule as soon as the information becomes available.

The Governor of New Mexico and the First Lady will be attending the opening reception on Friday evening, November 3, 2000, from 4:00 to 6:00 p.m. There will be classical music and light refreshments. (No alcoholic beverages are allowed in state buildings.) Please dress accordingly for the evening receptions. Please refrain from wearing jeans.

In addition to the opening of *Exit/Entrance*, there will be an opening of a special invitational exhibit of 15 art quilts by New Mexico artists in the Governor's Gallery. This is a unique gallery upstairs in the Capitol building next door to the Governor's office.

GETTING TO SANTA FE

To Santa Fe From:	Miles	Drive Time	Fly Time (Hrs)*
Albuquerque, NM	59	1	.5
Amarillo, TX	239	4	1
Atlanta, GA	1409	24	3.5
Colorado Springs, CO	323	5.5	1
Chicago, IL	1320	23	5
Cincinnati, OH	1376	24	5
Dallas, TX	631	11	1.5
Denver, CO	389	6.5	1
El Paso, TX	326	6	1
Houston, TX	879	15	2
Los Angeles, CA	863	14	2
Lubbock, TX	307	5.5	1
Minneapolis, MN	1207	21	6
New York, NY	2005	34	6.5
Oklahoma, OK	528	9	3.5
Pueblo, CO	280	5	1
Phoenix, AZ	524	10	1
San Diego, CA	877	15	2
San Francisco, CA	1160	19	3
Tucson, AZ	511	11	1
Washington, DC	1882	32	6

* All flights, except from Albuquerque to Santa Fe, are to the Albuquerque International Airport

Santa Fe is located in north central New Mexico in the foothills of the Sangre de Cristo Mountains (the southern most section of the Rocky Mountains) at an altitude of 7,000 feet. Ten major air carriers have regularly scheduled flights into the Albuquerque International Airport, a one-hour drive from Santa Fe.



AREA LOCATOR MAP



MEMBERS' NEWS

- Ann Brauer has been selected as finalist for a NICHE Award in the fiber-pieced/quilted category for her quilts, "Mystery of Roses" and "There Is a Rose." Founded in 1990, the NICHE Awards program recognizes the outstanding creative achievements of American craft artists who produce works for craft galleries and retail stores. Ann recently wrote an article for *Threads Magazine*.

- Jean Liittschwager and Sheila Steers will have work in *Fabric Locomotives*, a contemporary art quilt show by members of Tactile Expressions, held June 1 through July 31, 2000, at Washington Abbey Gallery, Eugene, Oregon.

- Nancy Erickson will exhibit selected works at the San Jose Museum of Quilts and Textiles, San Jose, California, May 12 through July 9, 2000.

- Marcia Stein will be exhibiting her work at Thirteen Moons Gallery, Santa Fe, New Mexico, March 3 - 30, 2000.

- Eleanor A. McCain will display her work in *Materials: Hard & Soft, 2000* at Greater Denton Arts Council, Denton, Texas, from January 29 through March 10, 2000. Her work is also included in an invitational show *Celebrate Downtown* at Gallery of Art, Panama City Beach, Florida, and *These Aren't Your Grandma's Quilts*, an invitational show at J. Funk Art Gallery, Maumee, Ohio.

- Artists report success in popular 1999 exhibitions, namely Rae Nancarrow, who had a solo exhibit at the Anchorage Museum of History and Arts and exhibits in Alaska, Arizona, and Texas. Her work has been published in *Art/Quilt Magazine*, #10 and *Fiberarts, Design Book Six*. Darcy Falk reports her work was included in the Gayle Willson Gallery, Southampton, New York, exhibit *Asian Persuasion*. Heather Allen appeared on "Modern Masters," Home and Garden TV series. Jill LeCroisette and Wendy Hill were juried into *Tactile Architecture 1999*. Jill also showed at Boehm Gallery, San Marcos, California. Look for Wendy's new book with C & T Publishing entitled *On The Flip Side*, a technique-project book on reversible quilts. Lauren Camp reports that her work has been published in several issues of *Quilter's Newsletter Magazine* and *The Santa Fe Reporter*.

- The New England Quilt Museum announces the exhibit, *Last Quarter Twentieth Century*, an exhibition of late 20th century quilt making, January 21 through March 25, 2000, in

Lowell, Massachusetts. The exhibit was curated by Nancy Halpern and Eliza Greenhoe-Bergh.

- Pat Owoc had work juried into *Something Old; Something New: Mini-Retrospectives* at The Stage Gallery in Merrick, New York, from October 15 through November 21, 1999. She has also been juried into *Materials: Hard and Soft* at the Center for The Visual Arts, Denton, Texas, from January 29 through March 10, 2000.

- Add Nancy Brennan Daniel's name to the list of SAQA member participants in the *Textile Academics* exhibit. Anthropology was not her first or second choice, but it was the topic Daniel used.

- Linda Filby-Fisher has retired from her psychotherapy practice and is now working full-time in her studio. Her telephone number has changed to 913-722-2608 and you can e-mail her at lffkc@aol.com.

- Bonnie Peterson received a Finalist Award in Visual Arts in the amount of \$700 from the Illinois Arts Council. The award is made by out-of-state art professors and was selected from 300 and 400 applicants. A total of 30 visual arts grants were awarded. Fellowships were awarded \$7,000 and finalists were awarded \$700. This complements the 1995 fellowship she received in crafts from the Illinois Arts Council.

- *World of New Colors*, contemporary fabric for the wall, a solo exhibition by artist, Marcia Hewitt Johnson, opens March 3, 2000, for one month at Bayeux Gallery, Denver, Colorado.

- Deborah Schwartzman requests that we correct information from our fall newsletter. The second annual PieceWorks Festival will present *Art Quilts at the Sedgwick*, April 6 - 30, 2000. An artist reception will be held April 7, 2000, from 6:00 to 9:00 p.m. The show will feature 26 art quilts displayed in the lobby of the 1940's Sedgwick Theater. Slides for *Art Quilts at the Sedgwick 2001* are due September 10, 2000. Send a SASE to Deborah Schwartzman, 646 Westview Street, Philadelphia, PA 19119, 215-438-5109, for more information.

- Sharon Heidingsfelder has two of her quilts hanging in the brand-new addition to the Little Rock Convention Center. The quilts will hang for six months with the possibility the Center will purchase them for their permanent collection.

NEWS FROM ART/QUILT MAGAZINE

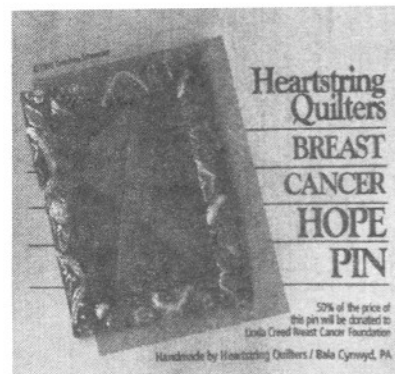
Lynn Lewis Young is compiling a list of galleries, art consultants, and agents who deal with art quilts on a regular basis. A list would be helpful to hand out at the trade shows when potential collectors visit Young's booth. Young plans to attend SOFA in Chicago soon. Please send any information to Lynn Young, Art/Quilt Magazine, PO Box 630927, Houston, TX 77263, FAX - 713-978-7054, or e-mail - ArtQuiltMg@aol.com.

Lynn is also compiling an article and exhibit on the influence of Anna William's quilts. Send slides and a statement about the influence you felt, or just a note if you want to be included, to the above address as soon as possible.

HOPE PINS

Cindy Friedman

Heartstring Quilters, of Bala Cynwyd, Pennsylvania, are a small guild of thirty which includes three SAQA members – Cindy Friedman, Lonni Rossi, and Deborah Schwartzman. Recently their guild focused its efforts on raising money for breast cancer research and support after a member shared her personal story of a diagnosis and mastectomy. The guild made and sold HOPE Pins – a paper-pieced pattern designed by member Gretchen Schroeder. They sold the pins in various places in conjunction with the Linda Creed Breast Cancer Foundation in Philadelphia. Some of the places included IQA at Houston, where Paula Nadelstern and Linda Joy graciously displayed them; schools, where one teacher wearing a pin started a flood of demand; and many places by word of mouth.



They have donated \$2,350.00 to research in the last three months, and there is still a strong market for the pins. Raising research funds is something concrete they can all do to help themselves, their mothers, their sisters, and their friends.

This project succeeded far beyond our expectations, and the pins seem to touch people in a deep and meaningful way. If you, or someone in your guild, is interested in doing a similar project, the pattern or license, is available through Gretchen at gsstudio@bootmail.com or 2633 Lenape Road, Philadelphia, PA 19131. Our hopes go with those battling breast cancer and our money is behind them!

PORTFOLIO ROTATION

Dominie Nash

We currently have about 80 professional artist members, and the portfolios look great. We encourage everyone to switch to 8 1/2 x 11 sheets but still accept postcards if that's what you have. It is better to have something in your file rather than waiting until you have the perfect sheet. (I know this from personal experience.) I've noticed a number of names on the list from whom I've not received any visuals. You've paid your money, so why not take advantage of a good opportunity to promote your work. If you haven't renewed, do so as soon as possible so you'll be included in the next mailing.

If you have questions, or suggestions concerning contacts, the quickest way to reach me is by e-mail at dominie@his.com. But I can also be reached at my studio telephone at 202-722-1407. I count on each of you to recommend contacts to add to my portfolio recipient list. Also, I'd like to have your e-mail address if you have one. I can let you know quicker if I need more materials from you if I have it. If it isn't in the current directory, please e-mail your address to me. Otherwise, I do send a reminder when your supply is low, but I have become addicted to instant gratification.

Finally, we need feedback! If you are contacted for shows, sales, commissions, etc., through efforts made by SAQA, please send me the information, even if you're not sure how the contact found you. We need to know whether this is all worthwhile and how to improve our presentation.

Portfolios were recently sent to the following:

Wendy Outland, Gallery Manager, Asheville, NC
Dorothy Hodges and Christie Taylor, Directors, Hodges Taylor Gallery, Charlotte, NC
Rob Williams, Gallery WDO, Charlotte, NC
Lisa Von Holt, St. Louis, MO
Mary Briggs, Director, Foster/White Gallery, Kirkland, WA
Ted Pietrzak, Director, Burchfield-Penney Art Center: Sylvia L. Rosen Gallery for Fine Art in the Craft Media, Buffalo State College, Buffalo, NY
Richard Andrews, Director, Henry Art Gallery, University of Washington, Seattle, WA
William J. Hennessey, Director, Chrysler Museum of Art, Norfolk, VA
Contemporary Art Center of Virginia, Virginia Beach, VA
Lise Swensson, Director, Peninsula Fine Arts Center, Newport News, VA
College of William and Mary, Williamsburg, VA
Susan Cummins, Director, Susan Cummins Gallery, Mill Valley, CA
Sherry Leedy, Director, Sherry Leedy Contemporary Art, Kansas City, MO

STUDIO ART QUILT ASSOCIATES

c/o Sharon Heidingsfelder
8010 Dan Thomas Road
Little Rock, AR 72206-4148

NONPROFIT ORG.
U.S. POSTAGE
PAID
LITTLE ROCK, AR
PERMIT NO. 1632

Studio Art Quilt Associates Announces, Searching the Past for Paths to the Future

A Major Conference to be held
November 1 - 5, 2000, in Santa Fe, New Mexico.

All you need to know about this event is listed in this complimentary issue of the membership newsletter.
The conference is open to all. Come and enjoy Santa Fe with us.

For information regarding joining Studio Art Quilt Associates,
contact us at **SAQA, PO Box 287, Dexter, OR 97431**, or
visit our web site, <http://www.saqa.com>, or e-mail us at info@saqa.com.

SAQA NEWSLETTER

Winter 2000

Volume 10, Number 1

The SAQA newsletter is a quarterly publication of the Studio Art Quilt Associates, a non-profit organization founded to promote the importance of the studio art quilt.

To submit information to the newsletter, write Yvonne Porcello, 3619 Shoemaker Avenue, Modesto, CA 95358, 209-524-1134 (telephone and FAX), porcella@cdepot.net (e-mail). (Deadlines for information are December 1, March 1, June 1, and September 1.)

The newsletter editor is Sharon Heidingsfelder, 8010 Dan Thomas Road, Little Rock, AR 72206-4148; (501) 490-4043 (telephone); (501) 490-0436 (FAX); sheidingsfel@aristotle.net (e-mail).

For information on SAQA, write PO Box 287, Dexter, OR 97431, info@saqa.com, <http://www.saqa.com>. (Membership is \$35 per year; \$100 per year for professional artist members.)

BOARD OF DIRECTORS

Karen Berkenfeld – Quilt Artist (New York, NY)
Darcy Falk – Quilt Artist/Author (Flagstaff, AZ)
Sharon Heidingsfelder – Quilt Artist/Author/Teacher (Little Rock, AR)
Wendy Huhn – Quilt Artist/Teacher (Dexter, OR)
Marcia Johnson – Quilt Artist/Teacher (Ardmore, PA)
Yvonne Porcella – Quilt Artist/Author/Teacher (Modesto, CA)
Katie Pasquini-Masopust – Quilt Artist/Teacher (Santa Fe, NM)

BOARD OF ADVISORS

Constance Bird – Certified Public Accountant, Clendenin, Bird, & Billington (Modesto, CA)
Martha Connell – Owner of Connell Gallery/Great American Gallery (Atlanta, GA)
Hilary Fletcher – Coordinator, Quilt National (Athens, OH)
Sandi Fox – Quilt Historian/Curator (Los Angeles, CA)
Beth Gutcheon – Author/Teacher/Novelist/Quilt Artist/Screen Writer (San Francisco, CA)
Rebecca A. T. Stevens – Consulting Curator, Contemporary Textiles, The Textile Museum (Washington, DC)
Sue Pierce – Quilt Artist/Curator (Rockville, MD)